

Pinpoint's robust in-vehicle products are designed and manufactured in Australia.

TRK Series In Vehicle Unit (IVU)

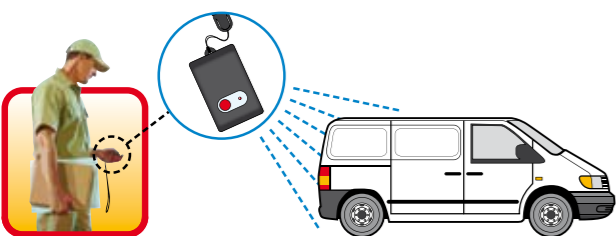
The TRK Series of IVU are designed and manufactured in Australia by Pinpoint Communications.

The TRK Series collects and sends vehicle activity information, including messaging and navigation via GPRS and GPS.

The IVU has been built to rigorous military standards and will withstand extreme temperatures, vibration and is dust and water proof to IP65.

Solve Occupational Health and Safety Challenges

The Pinpoint AVM system can be tailored to solve OH&S issues such as; Lone worker notification; Duress alarms and Alarm handling; Driver Fatigue Management and Reporting.



Now it's easy to locate your assets on a street level map in seconds

Field Service, Job Dispatch and Sign on Glass POD Solutions

Pinpoint's PDA Software and Mobile Data Terminal (MDT) offers low cost, reliable and secure two-way job dispatch, messaging and sign on glass POD. A choice of MDT or PDA devices can interface with our Web Based or Locator Client software. When interfaced with the Pinpoint Portal Server you can send and receive job data directly between your dispatch application and the data terminal.



Pinpoint's PDA and MDT solutions offer fast and dependable communication with your mobile workforce.

TRK SERIES SPECIFICATIONS

	TRK1000	TRK2000	TRK Trailer
Configurable Digital I/O's	3	7	N/A
Analogue Inputs	N/A	2	N/A
RS232	1	2	N/A
Battery Back-up	Included	Included	Included
Ignition		Standard	
Movement Sensor		Standard	
Battery Levels		Standard	
Power		Auto sensing 8-30V	
Power Consumption		Standby <8mA Operational <60mA	

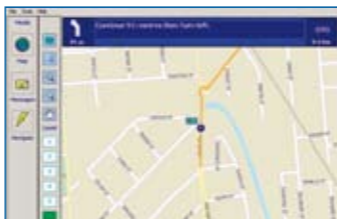
Smart Locator and In Car Client

Our 'Smart Locator' Client software is perfect for organisations that need to view their mobile assets in real time, on a full screen map. Ideal for schedulers, radio room operators, or an emergency situation room.



Smart Locator

The Pinpoint 'In Car Locator' is ideal for organisations wanting to combine the power of GPS monitoring, job dispatch and in-vehicle navigation into a single integrated product.



Smart Locator In Car

Call Pinpoint to arrange a free demonstration of our AVM System on **02 9804 1764** or visit our web site **www.pinpointcomms.com.au**



Pinpoint Communications Pty Ltd
 ABN 30 091 898 547
 PO Box 76
 Ermington 2115 NSW Australia

T +61 2 9804 1764
 F +61 2 9804 1754
 info@pinpointcomms.com.au
 www.pinpointcomms.com.au



MOTOR VEHICLES • TRUCKS • CONSTRUCTION EQUIPMENT • TRAINS • TRAILERS • BOATS

Advanced Vehicle Manager (AVM)

INTELLIGENT GPS TRACKING AND MOBILE COMMUNICATIONS



Pinpoint's Advanced Vehicle Manager (AVM) is a superior asset management tool designed to increase productivity.

Pinpoint's AVM is a web-based application that gives you the accurate GPS location and status of your fleet 24-hours a day, seven days a week.

The AVM is integrated with the latest Navteq maps enabling you to zoom in on the precise location of your vehicle or asset.

Better customer service, efficiency and safety

A comprehensive suite of reports allows you to analyse the productivity of your mobile assets.

The combination of these reports, real time vehicle location and communication options gives you an effective and powerful tool. Pinpoint's AVM is designed to improve customer service, operational efficiency, workplace safety and compliance to Government and corporate regulations.

Generate significant savings with minimum outlay!

Pinpoint's WebAVM provides a comprehensive suite of reports that allows companies to analyse the productivity of their mobile assets. Reports can be generated for a vehicle to study individual behaviour such as arrival times at customer site, length of time stopped, gate times of depot, whilst summary reports help customers to quickly understand vehicle engine hours and odometer, utilisation and operating hours.

With over 25 standard reports you will find a report to drive better efficiency's in your business.

Vehicle Performance Summary report for											
Start		23/04/2008 12:59 AM		Stop		24/04/2008 12:59 PM					
# Speed violations:	21	# Idling violations:	12	# Harsh Brakings:	6						
% Inside operating hours:	200.0	% Outside operating hours:	0.0	% Working hours active:	38.2						
Total number of records: 9											
Name	#Speed violations	#Idling violations	Harsh Braking	Harsh acceleration	Time operating hours	Outside operating hours %	Working hours active %	Distance travelled km			
12	0	0	0	0	300.0	0.0	56.1	269.3			
17	0	0	0	1	300.0	0.0	22.0	119.7			
19	0	1	0	0	300.0	0.0	22.0	209.9			
20	0	0	0	0	300.0	0.0	14.0	99.4			
22	0	1	0	0	300.0	0.0	18.9	159.2			
26	0	1	0	0	300.0	0.0	13.7	129.6			
28	0	1	0	0	300.0	0.0	11.4	64.4			
40	31	4	0	1	306.6	0.0	23.0	184.9			
46	0	0	0	0	300.0	0.0	19.1	210.3			
Total	21	22	0	2	3000.0	0.0	85.3	1553.4			

AVM functionality enables valuable and measurable benefits

The Pinpoint AVM delivers many benefits when tracking your mobile assets, such as:

- > Reducing your fuel and maintenance costs.
- > Delivering real time vehicle location for effective dispatching, security and customer service.
- > Improving security & protection for drivers & vehicles.
- > Two-way dispatch, messaging and Sign on Glass POD at a fraction of the cost of mobile or SMS systems.
- > Providing analysis of historical data of driver behaviour, routes, customer site visits, productive vehicle usage and more.
- > Monitoring on-board vehicle systems such as PTO and warning lamps.

Accurate GPS location & fleet status at your fingertips – 24/7

HERE'S WHAT SOME OF OUR CUSTOMERS SAY...

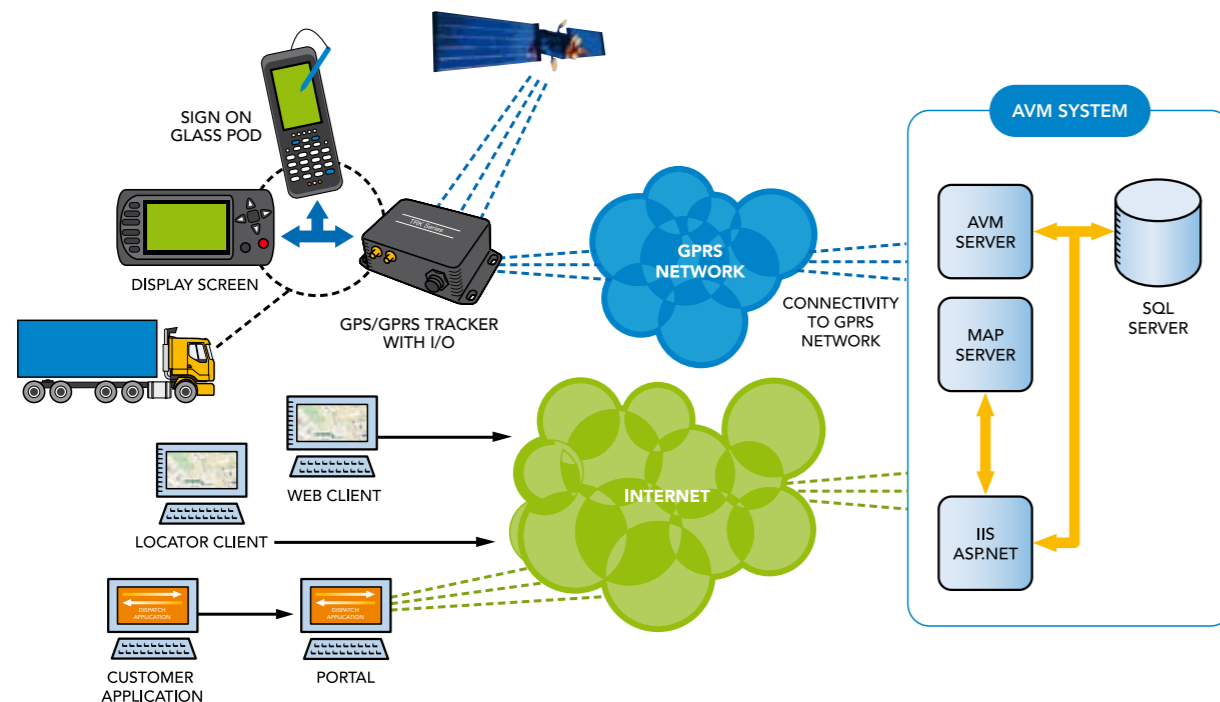
With Pinpoint's AVM system we have achieved total visibility of our PUD fleet in Sydney, Melbourne and Brisbane. The AVM has raised the bar for customer service levels and improved security for their freight.

- Peter Mann, General Manager
Riteway Express

Keeping our customers informed about drop-off and pick-up times and ensuring waste is disposed of in the appropriate facilities are key performance indicators for our business. With the introduction of the Pinpoint AVM GPS tracking system, our team of schedulers now has 100% transparency of truck locations and turnaround times at transfer stations. The AVM is an invaluable resource that keeps DATS on the cutting edge of customer service.

- Scott Croweller, Managing Director
DATS Skip Bins

How the Pinpoint AVM system works



ADVANCED FEATURES AND BENEFITS

	Freight & Logistics	Field Service	Asset Management
Improve customer service with complete visibility of your fleet. Identify the best vehicle for the job.	✓	✓	✓
Make drivers and operators more accountable for their time and use of the vehicle or equipment.	✓	✓	✓
Gather remote data (e.g.: vehicle odometer, engine hours, kilometres travelled, & route travelled).	✓	✓	✓
Eliminate errors by automating job dispatch direct to the vehicle and the driver.	✓	✓	✓
Save time by getting immediate job response data from the field.	✓	✓	✓
Save time and money in generating reports for fatigue management and corporate compliance.	✓	✓	✓
Reduce the use of contract drivers by getting more productivity from your existing fleet.	✓	✓	✓
Reduce unauthorised use of company vehicles.	✓	✓	✓
Verify billable hours. Report on working hours. View time spent inside/outside working hours.	✓	✓	✓
Real time alerts for movement, power failure, use inside/outside operating parameters.	✓	✓	✓
Locate your asset on a street level map, recover assets by locating GPS position.	✓	✓	✓
Engine hour reports for service scheduling and equipment use.	✓	✓	✓